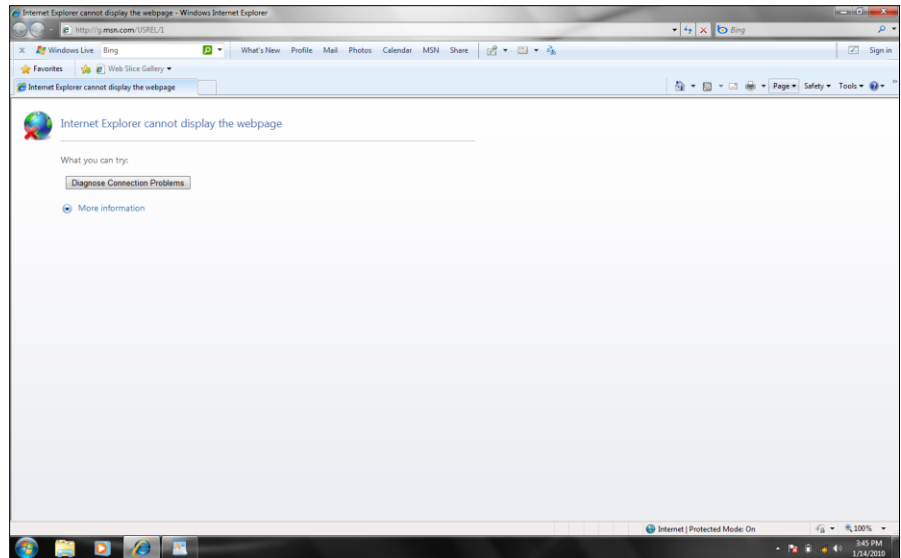


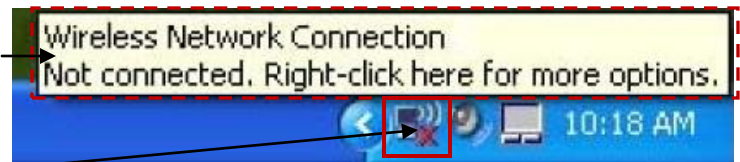
If you have never used GCC's wireless network, you may see a screen similar displayed on the left.



This process below details how to connect to eGCC's wireless network for the first time using Windows XP. Windows XP will keep the name of the network in a list, automatically connecting to it in the future if it senses it is the most preferred network in range.

1. Locate the wireless icon. Normally located in the lower right-hand corner of your computer screen.

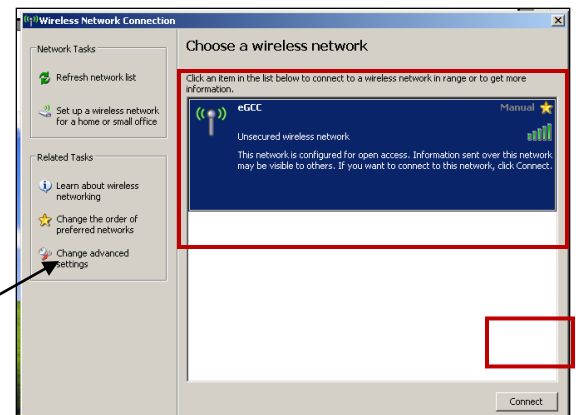
- a. Place your mouse over the icon and a pop-up window will indicate that you are **Not Connected**.



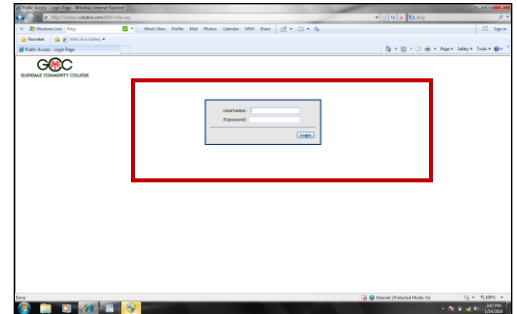
- b. Next, click the wireless icon.

2. A window will appear listing available connections, select eGCC. (In this example, only eGCC appears.) Next, click the **Connect** button.

Note: When eGCC is selected, it is added to a list of "connect automatically," networks. If you want to view this list, click the **Change Advanced** menu item and select the **Wireless Network** tab.



3. Launch your web browser.
4. At the login screen, enter your **eGCC username and password**. Then click the **Login** button.



5. Upon successful login, you will be presented a list of links. You may choose from the list or enter the desired url in the web browser's address bar.

